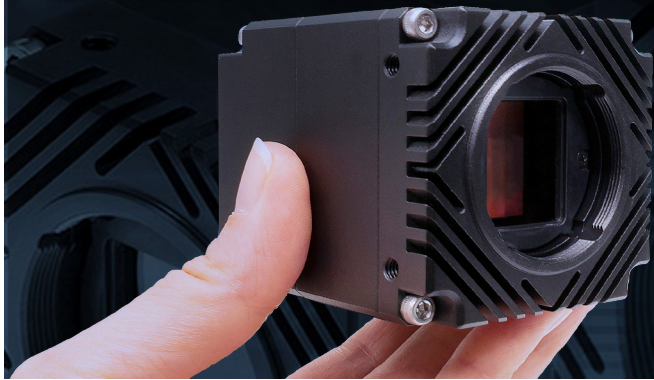


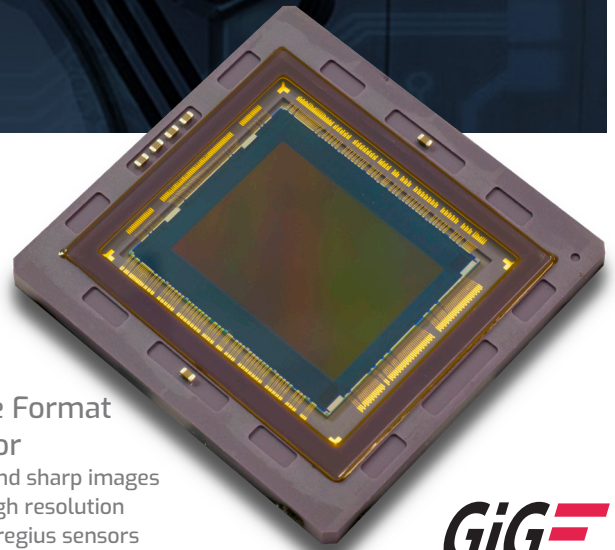
# Atlas™

5GigE

5.0 MP to 31.4 MP Sony Pregius Sensors over 5GBASE-T PoE



- Active Sensor Alignment
- Power over Ethernet (PoE)
- Use existing Cat5e or Cat6 cables
- Up to 600MB/s data transfer rates

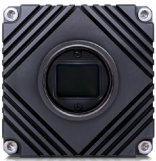


**Large Format Sensor**  
Clear and sharp images with high resolution Sony Pregius sensors

**GigE**  
VISION



TFL-Mount



C-Mount



M12 & M8 Connectors

## Atlas Models

Model	MP	Resolution	FPS	Sensor	Format	Pixel Size	Shutter	Lens Mount	Chroma	GigE Interface
ATL314S	31.4 MP	6464 x 4852 px	17.9 fps	Sony IMX342 CMOS	APS-C 27.9mm	3.45 μm	Global	TFL(M35 x 0.75)/No-Mount	M/C	5GBASE-T, M12
ATL196S	19.6 MP	4416 x 4428 px	27.9 fps	Sony IMX367 CMOS	4/3" 21.7mm	3.45 μm	Global	TFL (M35 x 0.75)	M/C	5GBASE-T, M12
ATL168S	16.8 MP	5456 x 3076 px	32.9 fps	Sony IMX387 CMOS	4/3" 21.6mm	3.45 μm	Global	TFL (M35 x 0.75)	M/C	5GBASE-T, M12
ATL120S	12.3 MP	4096 x 3000 px	42.5 fps	Sony IMX253 CMOS	1.1"	3.45 μm	Global	C	M/C	5GBASE-T, M12
ATL089S	8.9 MP	4096 x 2160 px	58.5 fps	Sony IMX255 CMOS	1"	3.45 μm	Global	C	M/C	5GBASE-T, M12
ATL071S	7.1 MP	3208 x 2200 px	74.6 fps	Sony IMX420 CMOS	1.1"	4.5 μm	Global	C	M/C	5GBASE-T, M12
ATL050S	5.0 MP	2448 x 2048 px	98 fps	Sony IMX250 CMOS	2/3"	3.45 μm	Global	C	M /C	5GBASE-T, M12
ATL028S	2.8 MP	1936 x 1464 px	173 fps	Sony IMX421 CMOS	2/3"	4.5 μm	Global	C	M/C	5GBASE-T, M12

### Specifications

Interface, Power, and Size Information	
Digital Interface	5GBASE-T, 2.5GBASE-T, 1000BASE-T, 100BASE-TX M12, PoE
GPIO Interface	8 pin M8 connector
Opto-isolated I/O ports	1 input, 1 output
Non-isolated I/O ports	2 bi-directional
Dimensions	55 x 55 x 70 mm
Lens Mount	TFL-mount, C-Mount
Weight	240 g
Power Requirement	PoE (IEEE 802.3af), or 12-24 VDC external
Power Consumption	8.5W via PoE, 8W when powered externally

Imaging Properties	
Image Buffer	380 MB
Image Processing	Gain, gamma, black level, white balance, LUT, CCM, pixel correction, hue, saturation, color space conversion
Pixel Formats	Mono8/10/12/16, Bayer8/10/12/16, RGB8, BGR8, YCbCr8, YCbCr411, YUV422, YUV411
Image Modes	Horizontal and vertical binning, decimation, ROI, horizontal and vertical flip
ADC	8, 10, 12 bit
Gain Range	0 dB to 48 dB analog and digital
Exposure Time	30 $\mu$ s to 10 s

Standard and Certifications	
Standard	GigE Vision v2.0
Compliance	CE, FCC, RoHS, REACH, WEEE
Storage Temperature	-30 to 60°C
Operating Temperature	-20 to 55°C
Humidity	Operating: 20% ~ 80%, relative, non-condensing
Warranty	3 year

Camera Features	
User Sets	1 default and 2 custom user set
File system size	16 MB
Chunk Data	Frame counter, offset X/Y, width/height, exposure time, gain, black level, line status, sequencer set
Event Data	Exposure start/end
Counter & Timer	2 counters and 2 timers
Sequencer	Exposure time, gain
Synchronization	Software trigger, hardware trigger, PTP (IEEE 1588)

### TFL-Mount / C-Mount Models

