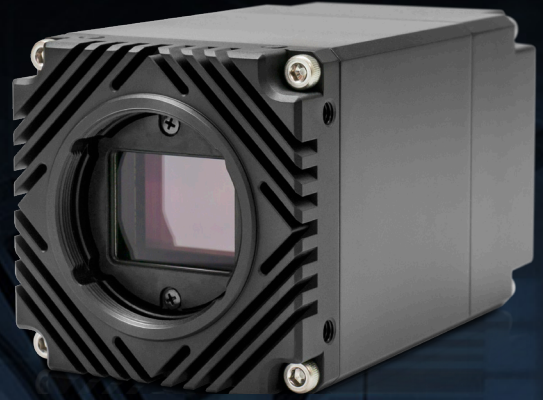


Atlas10™

10GBASE-T with PoE, Featuring 4th Gen Pregius S

- Up to 1.2 GB/s data transfer rates
- Pregius S Back Illuminated Global Shutter CMOS
- Active Sensor Alignment
- Power over Ethernet (PoE)



4th GENERATION
Pregius S

Atlas10 Model

Model	MP	Resolution	FPS	Sensor	Format	Pixel Size	Shutter	Lens Mount	Chroma	GigE Interface
ATX245S	24.5 MP	5320 x 4600 px	50.6 fps	Sony IMX530 CMOS	4/3"	2.74 µm	Global	TFL (M35 x 0.75)	M/C	10GBASE-T, M12
ATX204S	20.4 MP	4510 x 4510 px	61 fps	Sony IMX531 CMOS	1.1"	2.74 µm	Global	C-mount	M/C	10GBASE-T, M12
ATX162S	16.2 MP	5320 x 3040 px	76.1 fps	Sony IMX532 CMOS	1.1"	2.74 µm	Global	C-mount	M/C	10GBASE-T, M12
ATX124S	12.3 MP	4096 x 3000 px	100 fps	Sony IMX535 CMOS	1/1.1"	2.74 µm	Global	C-mount	M/C	10GBASE-T, M12
ATX081S	8.1 MP	2840 x 2840 px	153 fps	Sony IMX536 CMOS	2/3"	2.74 µm	Global	C-mount	M/C	10GBASE-T, M12
ATX051S	5.0 MP	2448 x 2048 px	247 fps	Sony IMX537 CMOS	1/1.8"	2.74 µm	Global	C-mount	M/C	10GBASE-T, M12

Specifications

Interface, Power, and Size Information

Digital Interface	10GBASE-T*, 5GBASE-T, 2.5GBASE-T, 1000BASE-T, 100BASE-TX M12, PoE (*10GBASE-T runs in short reach mode, 25m cable length max)
GPIO Interface	8 pin M8 connector
Opto-isolated I/O ports	1 input, 1 output
Non-isolated I/O ports	2 bi-directional
Dimensions	55 x 55 x 95.5 mm
Lens Mount	TFL-Mount
Weight	304 g
Power Requirement	PoE+ (IEEE 802.3at), or 18-24 VDC through GPIO
Power Consumption	<12W via PoE+, 11.5W when powered externally

Standard and Certifications

Standard	GigE Vision v2.0
Compliance	CE, FCC, RoHS, REACH, WEEE
Storage Temperature	-30 to 60°C
Operating Temperature	-20 to 55°C ambient
Humidity	Operating: 20% ~ 80%, relative, non-condensing
Warranty	3 year

Imaging Properties

Image Buffer	380 MB
Image Processing	Gain, gamma, black level, white balance, LUT, CCM, pixel correction, hue, saturation, color space conversion
Pixel Formats	Mono8/10/12/16, Bayer8/10/12/16, RGB8, BGR8, YCbCr8, YCbCr411, YUV422, YUV411
Image Modes	Horizontal and vertical binning, decimation, ROI, horizontal and vertical flip
ADC	8, 10, 12 bit
Gain Range	0 dB to 48 dB analog and digital
Exposure Time	30 µs to 10 s

Camera Features

User Sets	1 default and 2 custom user set
File system size	16 MB
Chunk Data	Frame counter, offset X/Y, width/height, exposure time, gain, black level, line status, sequencer set
Event Data	Exposure start/end
Counter & Timer	2 counters and 2 timers
Sequencer	Exposure time, gain
Synchronization	Software trigger, hardware trigger, PTP (IEEE 1588)

Atlas10

10GBASE-T with PoE, Featuring 4th Gen Pregius S

