

PHOENIX™

Flexible Camera Module Designed for Easy OEM Integration

The Phoenix is a micro compact camera with a versatile board design, measuring only 24 x 24 mm and 28 x 28 mm. Its default shape resembles a traditional camera but can easily be transformed to best fit your application. It further advances industrial miniaturization with options for compact S or NF-mount lens and FCC or ix Industrial® Ethernet connectors.





PHOENIX™

Flexible Camera Module Designed for Easy OEM Integration

24 x 24 mm Models



| Model | MP | Resolution | FPS | Sensor | Format | Pixel Size | Shutter | Lens Mount | GigE Interface |
|------------------------|---------|----------------|----------|--|--------|------------|---------|------------|----------------|
| PHX122S | 12.2 MP | 4024 x 3036 px | 9.7 fps | Sony IMX226 CMOS | 1/1.7" | 1.85 µm | Rolling | C | RJ45 / ix |
| PHX064S | 6.3 MP | 3072 x 2048 px | 19.5 fps | Sony IMX178 CMOS | 1/1.8" | 2.4 µm | Rolling | C | RJ45 / ix |
| PHX050S-P PHX050S-Q | 5.0 MP | 2448 x 2048 px | 24 fps | Sony IMX250MZR CMOS Sony IMX250MYR CMOS | 2/3" | 3.45 µm | Global | C/NF | RJ45 / ix |
| PHX050S | 5.0 MP | 2448 x 2048 px | 24 fps | Sony IMX264 CMOS | 2/3" | 3.45 µm | Global | C/NF/None | RJ45 / ix |
| PHX032S | 3.2 MP | 2048 x 1536 px | 38 fps | Sony IMX265 CMOS | 1/1.8" | 3.45 µm | Global | C/NF/S | RJ45 / ix |
| PHX023S | 2.3 MP | 1920 x 1200 px | 52 fps | Sony IMX392 CMOS | 1/2.3" | 3.45 µm | Global | C/NF | RJ45 / ix |
| PHX016S | 1.6 MP | 1440 x 1080 px | 77 fps | Sony IMX273 CMOS | 1/2.9" | 3.45 µm | Global | C/NF/S | RJ45 / ix |
| PHX004S | 0.4 MP | 728 x 544 px | 291 fps | Sony IMX287 CMOS | 1/2.9" | 6.9 µm | Global | C/NF/S | RJ45 / ix |

28 x 28 mm Models



| Model | MP | Resolution | FPS | Sensor | Format | Pixel Size | Shutter | Lens Mount | GigE Interface |
|---------|---------|----------------|----------|------------------|--------|------------|---------|------------|----------------|
| PHX200S | 20.0 MP | 5472 x 3648 px | 6 fps | Sony IMX183 CMOS | 1" | 2.40 µm | Rolling | C | RJ45 |
| PHX120S | 12.3 MP | 4096 x 3000 px | 10 fps | Sony IMX304 CMOS | 1.1" | 3.45 µm | Global | C | RJ45 |
| PHX089S | 8.9 MP | 4096 x 2160 px | 13.7 fps | Sony IMX267 CMOS | 1" | 3.45 µm | Global | C | RJ45 |

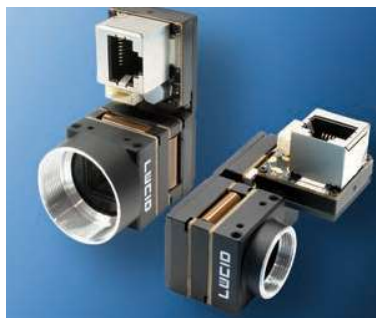
For the latest Phoenix models and machine vision accessories, including NF-mount lenses and ix Industrial cables please visit www.thinklucid.com

Highlights



NF-Mount Lens

The 5 MP lens is 40% smaller and up to 50% lighter while maintaining the same imaging performance as a standard C-mount lens.



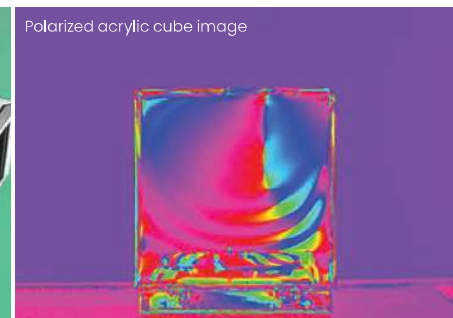
Transformable

Transform any Phoenix camera. Get everything you need with our Phoenix Transform Kit for 90° and 180° shape configurations.



ix Industrial® Connector

70% smaller than a RJ45 socket. High EMC and vibration protection, positive locking hooks, locking force over 98 n, and guaranteed 5,000 mating cycles.



Polarization Models

See beyond visible light with the Phoenix camera featuring Sony's IMX250MZR/MYR CMOS polarized sensors. Models PHX050S-P/Q.