



INDUSTRIAL/MACHINE VISION APPLICATIONS

FLIR ORYX[®]

P/N: ORX-10G-71S7

The ORX-10G-71S7 combines a Sony IMX420 global shutter CMOS sensor and a high-speed 10GigE interface to boost your imaging throughput. The IMX420 with selectable conversion gain makes it easy to switch between low read noise and high sensitivity for low-light imaging, and high saturation capacity for more brightly lit conditions.

www.flir.com/products/oryx-10gige

FEATURES

HIGH RESOLUTION SENSOR ON HIGH SPEED INTERFACE

Increase throughput by capturing 7.1 MP Global Shutter images at 112 FPS

RELIABILITY AND SIMPLICITY

10GBASE-T interface supports cables over 60m and makes multi-camera system set-up easy

FLEXIBILITY FOR INTEGRATORS

Develop innovative solutions quickly with GigE Vision compatibility and advanced on-camera features

APPLICATIONS

SPORTS ANALYTICS AND MOTION TRACKING

AUTOMATED OPTICAL INSPECTION

RESEARCH

HIGH-SPEED VOLUMETRIC CAPTURE



GEN<i>i>CAM

IEEE 1588

Pregius

SPECS	ORX-10G-71S7M-C	ORX-10G-71S7C-C
Resolution	3208 x 2200	
Frame Rate	112 FPS	
Megapixels	7.1 MP	
Chroma	Mono	Color
Sensor	Sony IMX420, CMOS, 1.1"	
Readout Method	Global shutter	
Pixel Size	4.5 µm	
Lens Mount	C-mount	
ADC	8-bit, 10-bit, and 12-bit	
Minimum Frame Rate*	1 FPS	
Gain Range*	0 to 47 dB	
Exposure Range*	10 µs to 30 s	
Acquisition Modes	Continuous, Single Frame, Multi Frame	
Partial Image Modes	Pixel binning, decimation, ROI	
Image Processing	Gamma, lookup table, and sharpness	Color correction matrix, gamma, lookup table, saturation, and sharpness
Sequencer	Up to 8 sets using 2 features	
Image Buffer	240 MB	
User Sets	2 user configuration sets for custom camera settings	
Flash Memory	4 MB non-volatile memory	
Opto-isolated I/O	2 input, 2 output	
Non-isolated I/O	2 bi-directional	
Serial Port	1 (over non-isolated I/O)	
Auxiliary Output	3.3 V, 120 mA maximum	
Interface	10GigE	
Power Requirements	Externally powered over GPIO (12 - 24 V)	
Power Consumption	13.6 W maximum (13.2 W nominal)	
Dimensions/Mass	60 mm x 60 mm x 100 mm / 500 g	
Machine Vision Standard	GigE Vision	
Time Synchronization Protocol	IEEE 1588 Precision Time Protocol	
Compliance	CE, FCC, KCC, RoHS, REACH. The ECCN for this product is: EAR099.	
Temperature	Operating: 0°C to 50°C Storage: -30°C to 60°C	
Humidity	Operating: 20% to 80% (no condensation) Storage: 30% to 95% (no condensation)	
Warranty	3 years	

*Ranges are the same in binning and no binning modes.

FLIR Integrated Imaging Solutions

CANADA

12051 Riverside Way
Richmond, BC, Canada
V6W 1K7
T: +1 866.765.0827 (toll free)
T: +1 604.242.9937
F: +1 604.242.9938
E: mv-sales@flir.com

USA

T: +1 866.765.0827 (toll free)
E: mv-na-sales@flir.com

EUROPE

T: +49 7141 488817-0
F: +49 7141 488817-99
E: mv-eusales@flir.com

CHINA

T: +86 10 8215 9938
F: +86 10 8215 9936
E: mv-chinasales@flir.com

ASIA

E: mv-asiasales@flir.com

www.flir.com/mv
NASDAQ: FLIR

©2019 FLIR® Integrated Imaging Solutions Inc. All rights reserved. Names and marks appearing on the products herein are either registered trademarks or trademarks of FLIR® Systems, Inc. and/or its subsidiaries. Specifications are subject to change without notice.

VN: 19-2602-OEM-ORX-10G-71S7-ENG-v1



The World's Sixth Sense®



INDUSTRIAL/MACHINE VISION APPLICATIONS

FLIR ORYX®

P/N: ORX-10G-89S6

ULTRA-HIGH RESOLUTION

The award winning Oryx 10GigE camera family allows systems designers to take advantage of the latest sensors by supporting transfer speeds up to 10Gbit/s enabling the capture of 4K resolution, 12-bit images at over 60FPS. Oryx's 10GBASE-T interface is a proven and widely deployed standard that provides reliable image transfer at cable lengths over 50 meters on inexpensive CAT6A, or greater than 30 m on CAT5e. On-camera features including IEEE1588 clock synchronization and full compatibility with popular third-party software supporting GigE Vision, gives system designers the tools to quickly develop innovative solutions.

www.flir.com/products/oryx-10gige

FEATURES

HIGH RESOLUTION SENSOR ON HIGH SPEED INTERFACE

Increase throughput by capturing 8.9 MP Global Shutter images at 93 FPS

RELIABILITY AND SIMPLICITY

10GBASE-T interface supports cables over 60m and makes multi-camera system set-up easy

FLEXIBILITY FOR INTEGRATORS

Develop innovative solutions quickly with GigE Vision compatibility and advanced on-camera features

APPLICATIONS

SPORTS ANALYTICS AND MOTION TRACKING

AUTOMATED OPTICAL INSPECTION

RESEARCH

LARGE VOLUME 3D SCANNING

BROADCAST + VR



SPECIFICATIONS

SPECS	ORX-10G-89S6M-C	ORX-10G-89S6C-C
Resolution	4096 x 2160	
Frame Rate	93 FPS	
Megapixels	8.9 MP	
Chroma	Mono	Color
Sensor	Sony IMX255, CMOS, 1"	
Readout Method	Global shutter	
Pixel Size	3.45 µm	
Lens Mount	C-mount	
ADC	8-bit, 10-bit, and 12-bit	
Minimum Frame Rate*	1 FPS	
Gain Range*	0 to 47 dB	
Exposure Range*	5 µs to 30 s	
Acquisition Modes	Continuous, Single Frame, Multi Frame	
Partial Image Modes	Pixel binning, decimation, ROI	
Image Processing	Gamma, lookup table, and sharpness	Color correction matrix, gamma, lookup table, saturation, and sharpness
Sequencer	Up to 8 sets using 2 features	
Image Buffer	240 MB	
User Sets	2 user configuration sets for custom camera settings	
Flash Memory	4 MB non-volatile memory	
Opto-isolated I/O	2 input, 2 output	
Non-isolated I/O	2 bi-directional	
Serial Port	1 (over non-isolated I/O)	
Auxiliary Output	3.3 V, 120 mA maximum	
Interface	10GigE	
Power Requirements	Externally powered over GPIO (12 - 24 V)	
Power Consumption	12.6 W maximum (12.3 W nominal)	
Dimensions/Mass	60 mm x 60 mm x 100 mm / 500 g	
Machine Vision Standard	GigE Vision	
Time Synchronization Protocol	IEEE 1588 Precision Time Protocol	
Compliance	CE, FCC, KCC, RoHS, REACH. The ECCN for this product is: EAR099.	
Temperature	Operating: 0°C to 50°C Storage: -30°C to 60°C	
Humidity	Operating: 20% to 80% (no condensation) Storage: 30% to 95% (no condensation)	
Warranty	3 years	

*Ranges are the same in binning and no binning modes.

FLIR Integrated Imaging Solutions

CANADA

12051 Riverside Way
Richmond, BC, Canada
V6W 1K7
T: +1 866.765.0827 (toll free)
T: +1 604.242.9937
F: +1 604.242.9938
E: mv-sales@flir.com

USA

T: +1 866.765.0827 (toll free)
E: mv-na-sales@flir.com

EUROPE

T: +49 7141 488817-0
F: +49 7141 488817-99
E: mv-eusales@flir.com

CHINA

T: +86 10 8215 9938
F: +86 10 8215 9936
E: mv-chinasales@flir.com

ASIA

E: mv-asiasales@flir.com

www.flir.com
NASDAQ: FLIR

©2019 FLIR® Integrated Imaging Solutions Inc. All rights reserved.
Names and marks appearing on the products herein are either registered trademarks or trademarks of FLIR® Systems, Inc. and/or its subsidiaries. Specifications are subject to change without notice.

VN: 19-2602-OEM-ORX-10G-89S6-v3

FIND THE BEST ORYX FOR
YOUR NEEDS



The World's Sixth Sense®



INDUSTRIAL/MACHINE VISION APPLICATIONS

FLIR ORYX®

P/N: ORX-10G-123S6

ULTRA-HIGH RESOLUTION

The award winning Oryx 10GigE camera family allows systems designers to take advantage of the latest sensors by supporting transfer speeds up to 10Gbit/s enabling the capture of 4K resolution, 12-bit images at over 60FPS. Oryx's 10GBASE-T interface is a proven and widely deployed standard that provides reliable image transfer at cable lengths over 50 meters on inexpensive CAT6A, or greater than 30 m on CAT5e. On-camera features including IEEE1588 clock synchronization and full compatibility with popular third-party software supporting GigE Vision, gives system designers the tools to quickly develop innovative solutions.

www.flir.com/products/oryx-10gige

FEATURES

HIGH RESOLUTION SENSOR ON HIGH SPEED INTERFACE

Increase throughput by capturing 12.3 MP Global Shutter images at 68 FPS

RELIABILITY AND SIMPLICITY

10GBASE-T interface supports cables over 60m and makes multi-camera system set-up easy

FLEXIBILITY FOR INTEGRATORS

Develop innovative solutions quickly with GigE Vision compatibility and advanced on-camera features

APPLICATIONS

SPORTS ANALYTICS AND MOTION TRACKING

AUTOMATED OPTICAL INSPECTION

RESEARCH

LARGE VOLUME 3D SCANNING

BROADCAST + VR



SPECIFICATIONS

SPECS	ORX-10G-123S6M-C	ORX-10G-123S6C-C
Resolution	4096 x 3000	
Frame Rate	68 FPS	
Megapixels	12.3 MP	
Chroma	Mono	Color
Sensor	Sony IMX253, CMOS, 1.1"	
Readout Method	Global shutter	
Pixel Size	3.45 µm	
Lens Mount	C-mount	
ADC	8-bit, 10-bit, and 12-bit	
Minimum Frame Rate*	1 FPS	
Gain Range*	0 to 47 dB	
Exposure Range*	5 µs to 30 s	
Acquisition Modes	Continuous, Single Frame, Multi Frame	
Partial Image Modes	Pixel binning, decimation, ROI	
Image Processing	Gamma, lookup table, and sharpness	Color correction matrix, gamma, lookup table, saturation, and sharpness
Sequencer	Up to 8 sets using 2 features	
Image Buffer	240 MB	
User Sets	2 user configuration sets for custom camera settings	
Flash Memory	4 MB non-volatile memory	
Opto-isolated I/O	2 input, 2 output	
Non-isolated I/O	2 bi-directional	
Serial Port	1 (over non-isolated I/O)	
Auxiliary Output	3.3 V, 120 mA maximum	
Interface	10GigE	
Power Requirements	Externally powered over GPIO (12 - 24 V)	
Power Consumption	13 W maximum (12.8 W nominal)	
Dimensions/Mass	60 mm x 60 mm x 100 mm / 500 g	
Machine Vision Standard	GigE Vision	
Time Synchronization Protocol	IEEE 1588 Precision Time Protocol	
Compliance	CE, FCC, KCC, RoHS, REACH. The ECCN for this product is: EAR099.	
Temperature	Operating: 0°C to 50°C Storage: -30°C to 60°C	
Humidity	Operating: 20% to 80% (no condensation) Storage: 30% to 95% (no condensation)	
Warranty	3 years	

*Ranges are the same in binning and no binning modes.

FLIR Integrated Imaging Solutions

CANADA

12051 Riverside Way
Richmond, BC, Canada
V6W 1K7
T: +1 866.765.0827 (toll free)
T: +1 604.242.9937
F: +1 604.242.9938
E: mv-sales@flir.com

USA

T: +1 866.765.0827 (toll free)
E: mv-na-sales@flir.com

EUROPE

T: +49 7141 488817-0
F: +49 7141 488817-99
E: mv-eusales@flir.com

CHINA

T: +86 10 8215 9938
F: +86 10 8215 9936
E: mv-chinasales@flir.com

ASIA

E: mv-asiasales@flir.com

www.flir.com
NASDAQ: FLIR

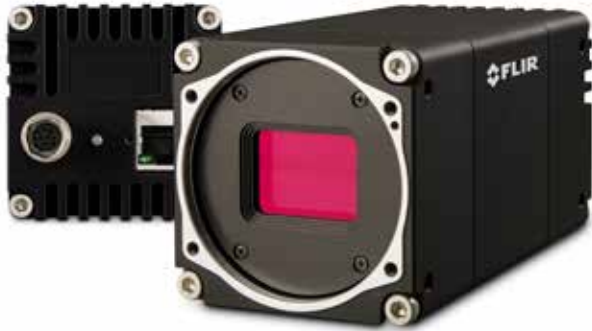
©2019 FLIR® Integrated Imaging Solutions Inc. All rights reserved.
Names and marks appearing on the products herein are either registered trademarks or trademarks of FLIR® Systems, Inc. and/or its subsidiaries. Specifications are subject to change without notice.

VN: 19-2602-OEM-ORX-10G-123S6-v1

FIND THE BEST ORX FOR
YOUR NEEDS



The World's Sixth Sense®



INDUSTRIAL/MACHINE VISION APPLICATIONS

FLIR ORYX[®]

P/N: ORX-10G-310S9

ULTRA-HIGH RESOLUTION

This Oryx model features Sony IMX342 Pregius global shutter CMOS sensor and maximizes your imaging output by delivering 31MP images at 26 FPS over its 10GigE interface. It is designed with flexibility in mind with its flat front providing easy support for custom optics or standard F-mount lenses with an optional lens mount accessory.

www.flir.com/products/oryx-10gige

FEATURES

HIGH RESOLUTION SENSOR ON HIGH SPEED INTERFACE

Increase throughput by capturing 31 MP Global Shutter images at 26 FPS

RELIABILITY AND SIMPLICITY

10GBASE-T interface supports cables over 60m and makes multi-camera system set-up easy

FLEXIBILITY FOR INTEGRATORS

Develop innovative solutions quickly with GigE Vision compatibility and advanced on-camera features

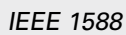
APPLICATIONS

SPORTS ANALYTICS AND MOTION TRACKING

AUTOMATED OPTICAL INSPECTION

RESEARCH

LARGE VOLUME 3D SCANNING



SPECS	ORX-10G-310S9M	ORX-10G-310S9C
Resolution	6464 x 4852	
Frame Rate	26 FPS	
Megapixels	31 MP	
Chroma	Mono	Color
Sensor	Sony IMX342, CMOS, APS-C	
Readout Method	Global shutter	
Pixel Size	3.45 µm	
Lens Mount	Sold separately	
ADC	8-bit, 10-bit, and 12-bit	
Minimum Frame Rate*	1 FPS	
Gain Range*	0 to 47 dB	
Exposure Range*	39 µs to 30 s	
Acquisition Modes	Continuous, Single Frame, Multi Frame	
Partial Image Modes	Pixel binning, decimation, ROI	
Image Processing	Gamma, lookup table, and sharpness	Color correction matrix, gamma, lookup table, saturation, and sharpness
Sequencer	Up to 8 sets using 2 features	
Image Buffer	240 MB, maximum 1 image	
User Sets	2 user configuration sets for custom camera settings	
Flash Memory	4 MB non-volatile memory	
Opto-isolated I/O	2 input, 2 output	
Non-isolated I/O	2 bi-directional	
Serial Port	1 (over non-isolated I/O)	
Auxiliary Output	3.3 V, 120 mA maximum	
Interface	10GigE	
Power Requirements	Externally powered over GPIO (12 - 24 V)	
Power Consumption	13.9 W maximum (13.6 W nominal)	
Dimensions/Mass	60 mm x 60 mm x 115 mm / 508 g	
Machine Vision Standard	GigE Vision	
Time Synchronization Protocol	IEEE 1588 Precision Time Protocol	
Compliance	CE, FCC, KCC, RoHS, REACH. The ECCN for this product is: EAR099.	
Temperature	Operating: 0°C to 50°C Storage: -30°C to 60°C	
Humidity	Operating: 20% to 80% (no condensation) Storage: 30% to 95% (no condensation)	
Warranty	3 years	

*Ranges are the same in binning and no binning modes.



OPTIONAL F-MOUNT
ACC-01-5014

FLIR Integrated Imaging Solutions

CANADA

12051 Riverside Way
Richmond, BC, Canada
V6W 1K7
T: +1 866.765.0827 (toll free)
T: +1 604.242.9937
F: +1 604.242.9938
E: mv-sales@flir.com

USA

T: +1 866.765.0827 (toll free)
E: mv-na-sales@flir.com

www.flir.com/mv

EUROPE

T: +49 7141 488817-0
F: +49 7141 488817-99
E: mv-eusales@flir.com

CHINA

T: +86 10 8215 9938
F: +86 10 8215 9936
E: mv-chinasales@flir.com

ASIA

E: mv-asiasales@flir.com

www.flir.com
NASDAQ: FLIR

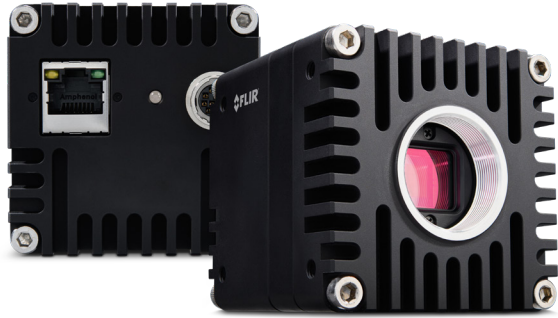
©2019 FLIR® Integrated Imaging Solutions Inc. All rights reserved.
Names and marks appearing on the products herein are either registered trademarks or trademarks of FLIR® Systems, Inc. and/or its subsidiaries. Specifications are subject to change without notice.

VN: ORX-10G-310S9-ENG-v8

FIND THE BEST ORYX FOR
YOUR NEEDS



The World's Sixth Sense®



INDUSTRIAL/MACHINE VISION APPLICATIONS

FLIR ORYX®

P/N: ORX-10GS-51S5

FAST AND VERSATILE

The award winning Oryx 10GigE camera family allows systems designers to take advantage of the latest sensors by supporting transfer speeds up to 10Gbit/s enabling the capture of 5 megapixel, 8-bit images at 163 FPS. Oryx's 10GBASE-T interface is a proven and widely deployed standard that provides reliable image transfer at cable lengths over 50 meters on inexpensive CAT6A, or greater than 30 m on CAT5e. On-camera features including IEEE1588 clock synchronization and full compatibility with popular third-party software supporting GigE Vision, gives system designers the tools to quickly develop innovative solutions.

www.flir.com/products/oryx-10gige

FEATURES

HIGH RESOLUTION SENSOR ON HIGH SPEED INTERFACE

Increase throughput by capturing 12.3 MP Global Shutter images at 68 FPS

RELIABILITY AND SIMPLICITY

10GBASE-T interface supports cables over 60m and makes multi-camera system set-up easy

FLEXIBILITY FOR INTEGRATORS

Develop innovative solutions quickly with GigE Vision compatibility and advanced on-camera features

APPLICATIONS

SPORTS ANALYTICS AND MOTION TRACKING

AUTOMATED OPTICAL INSPECTION

RESEARCH

LARGE VOLUME 3D SCANNING

BROADCAST + VR



SPECIFICATIONS

SPECS	ORX-10GS-51S5M-C	ORX-10GS-51S5C-C
Resolution	2448 x 2048	
Frame Rate	163 FPS	
Megapixels	5 MP	
Chroma	Mono	Color
Sensor	Sony IMX250, CMOS, 2/3"	
Readout Method	Global shutter	
Pixel Size	3.45 µm	
Lens Mount	C-mount	
ADC	8-bit, 10-bit, and 12-bit	
Minimum Frame Rate*	1 FPS	
Gain Range*	0 to 47 dB	
Exposure Range*	3 µs to 30 s	
Acquisition Modes	Continuous, Single Frame, Multi Frame	
Partial Image Modes	Pixel binning, decimation, ROI	
Image Processing	Gamma, lookup table, and sharpness	Color correction matrix, gamma, lookup table, saturation, and sharpness
Sequencer	Up to 8 sets using 2 features	
Image Buffer	240 MB	
User Sets	2 user configuration sets for custom camera settings	
Flash Memory	4 MB non-volatile memory	
Opto-isolated I/O	2 input, 2 output	
Non-isolated I/O	2 bi-directional	
Serial Port	1 (over non-isolated I/O)	
Auxiliary Output	3.3 V, 120 mA maximum	
Interface	10GigE	
Power Requirements	Externally powered over GPIO (12 - 24 V)	
Power Consumption	12.3 W maximum (11.7 W nominal)	
Dimensions/Mass	60 mm x 60 mm x 64 mm / 386 g	
Machine Vision Standard	GigE Vision	
Time Synchronization Protocol	IEEE 1588 Precision Time Protocol	
Compliance	CE, FCC, RoHS, REACH. The ECCN for this product is: EAR099.	
Temperature	Operating: 0°C to 70°C (case) Storage: -30°C to 60°C (ambient)	
Humidity	Operating: 20% to 80% (no condensation) Storage: 30% to 95% (no condensation)	
Warranty	3 years	

*Ranges are the same in binning and no binning modes.

FLIR Integrated Imaging Solutions

CANADA

12051 Riverside Way
Richmond, BC, Canada
V6W 1K7
T: +1 866.765.0827 (toll free)
T: +1 604.242.9937
F: +1 604.242.9938
E: mv-sales@flir.com

USA

T: +1 866.765.0827 (toll free)
E: mv-na-sales@flir.com

www.flir.com/mv

EUROPE

T: +49 7141 488817-0
F: +49 7141 488817-99
E: mv-eusales@flir.com

CHINA

T: +86 10 8215 9938
F: +86 10 8215 9936
E: mv-chinasales@flir.com

ASIA

E: mv-asiasales@flir.com

www.flir.com
NASDAQ: FLIR

©2020 FLIR® Integrated Imaging Solutions Inc. All rights reserved.
Names and marks appearing on the products herein are either registered trademarks or trademarks of FLIR® Systems, Inc. and/or its subsidiaries. Specifications are subject to change without notice.

VN: 20-0483-OEM-ORX-10GS-51S5-v2

FIND THE BEST ORYX
FOR YOUR NEEDS



The World's Sixth Sense®